

Customer Approval Sheet		
Application		
Model No.		Cell LIR1240 40mAh 0.15Wh
Part Number		NUEEELIR1240X04A
CPN		
Issued By	Approved By	Customer Confirmation
VN	JZ	

1. SCOPE

This document describes the performance characteristics and testing methods for LIR batteries provided by NuEnergy Storage Technologies.

2. PRODUCT TYPE AND MODEL NUMBER

2.1 PRODUCT TYPE

Lithium-ion Battery

2.2 MODEL NUMBER

LIR1240

SPECIFICATION

No.	Item	Characteristics	Remarks
3.1	Nominal Capacity	Minimum: 40mAh Typical: 42mAh	Fully charged @0.2C to 4.2V for 2.5 hrs., then discharge to 2.75V @ 0.2C.
3.2	Nominal Voltage	3.7V	
3.3	Charging Cut-off Voltage	4.2V	CC/CV Charge
3.4	Discharge Cut-off Voltage	2.75V	
3.5	Maximum Constant Charging Current	84mA	
3.6	Maximum Continuous Discharging Current	42mA	
3.7	Operating Temperature	Charge: 0~45°C Discharge: -20~60°C	
3.8	Storage Temperature	-20~45°C for 1Month -20~35°C for 6Months	
3.9	Weight	1.5g	Approximate value
3.10	Storage Voltage	3.7V	
3.11	Internal impedance	≤600 mΩ	

3. Dimensions

Please refer the drawing in appendix A.

4. Appearance

No scratches, dirt, defect, leakage of electrolyte or gassing should be observed as a new product.

5. Performance Characteristics

5.1 Electrochemical performance characteristics

No.	Item	Testing Method	Requirements
1	Fully Charged State	CC/CV or Constant current charge to 4.2V @0.2C follow by a constant voltage holding at 4.2V until current drops below 0.4mA.	
2	Rated Capacity	CC/CV at 4.2V (per 5.1.1) at room temp. (20±5C), rest for 1-2 hrs. then discharge at a constant current of 0.2C to 2.75V, testing will be terminated by either 5 cycles or any one discharge time exceeds 5 hrs.	≥40mAh
3	Cycle Life @25°C	Discharge to 2.75V @0.2C, then CCCV charge to 4.2V, rest for 10 min. discharge @ 0.2C to 2.75V and rest for 10 min. Continue the charge/discharge cycles until discharge capacity lower than 80% of rated capacity.	Cycle life ≥300

5.2 Reliability

No.	Item	Test Method	Requirements
1	High Temperature Test	Fully charged per 5.1.1, then stored the cells at 60±2°C for 2 hours.	Electrochemical performance visual test not changed
2	Low Temperature Test	Fully charge cells per 5.1.1, store them at -20±2°C for 2 hours. Then, cells are placed at room temperature for 3 hours.	No appreciable alternation electrochemically and visually
3	Humidity Test	Fully charge cells per 5.1.1, stored them at 40 ±2 °C with 90% ~95RH% for 48 hours. Then the cells are placed at room temperature to “dry out” for 2 hours.	No appreciable alternation electrochemically and visually

6. Standard Testing Environment

Temperature : 25±2°C

Relative humidity : 45±20% (unless specially requested)

7. Required Protective Functions

To ensure safety, the cells need to be assembled with PTC and protective circuitry to prevent abusive situations occur such as over charge and over discharge or over current. The charger and protective circuitry should be consistent with the requirements listed below:

8. Warranty

Warranty period for this product is 12 months from date of manufacture.

9. Liability

The user has to operate the products according to the instructions printed on the battery label or follow the advices described in this "Product Specification for Polymer Lithium Ion Batteries published by NuEnergy. In case the battery was overheated or even catch fire or explosion caused by mishandling of the user side, NuEnergy will not be liable for the loss caused by any of such mishandling.

NuEnergy will notify the users in written form if any modifications in specification, raw material, production process control.

10. Battery Packing Label

The following warnings should be indicated on the battery pack labels.

Use a specified charger.

Do not throw the battery into fire, or heat.

Do not short-circuit the battery terminals.

Do not disassemble the battery.

11. Warnings and Cautions in Handling the Lithium-ion Battery

To prevent potential leaking, overheating or explosion of batteries please be advised to take following precautions:

WARNINGS!

- Do not immerse the battery in water or seawater and keep the battery in a cool dry environment during stands by period.
- Do not use or leave the battery near a heat source such as fire or heater. When recharging, use the battery charger specifically for that purpose.
- Do not reverse the position (+) and negative (-) terminals.
Do not connect the battery to an electrical outlet.
- Do not dispose the battery in fire or heat.
- Do not short-circuit the battery by directly connecting the positive (+) and negative (-) terminal with metal objects such as wire.
- Do not transport or store the battery together with metal objects such as necklaces, hairpins etc.
Do not strike or throw the battery against hard surface.
- Do not directly solder the battery and pierce the battery with a nail or other sharp object.
- Do not use sharp things to hit the battery.

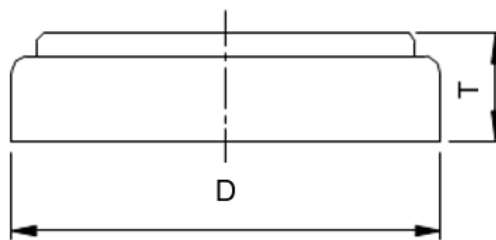
CAUTIONS!

- Do not use or leave the battery at very high temperature (for example, at strong direct sunlight or in a vehicle in extremely hot weather). Otherwise, it can overheat or fire or its performance will be degenerate, and its service life will be shortened.
- Do not use it in a location where static electricity is rich, otherwise, the safety devices may be damaged, causing a harmful situation.
- In case the electrolyte gets into the eyes due to the leakage of battery, do not rub the eyes! Rinse the eyes with clean running water and seek medical attention immediately. Otherwise, it may injure eyes or cause a loss of sight.

- If the battery gives off an odor, generates heat, becomes discolored or deformed, or in any way appear abnormal during use, recharging or storage, immediately remove it from the device or battery charger and place it in a container vessel such as a metal box.
- In case the battery terminals are contaminated, clean the terminals with a dry cloth before use. Otherwise power failure or charge failure may occur due to the poor connection between the battery and the electronic circuitry of the instrument.
- Be aware discarded batteries may cause fire, tape the battery terminals to insulate them before disposal.

APPENDIX A

Drawing: Unit - mm



ITEM	STANDARD	
	T	4.0mm
-0.10		
D	12.0mm	+0.10
		-0.10